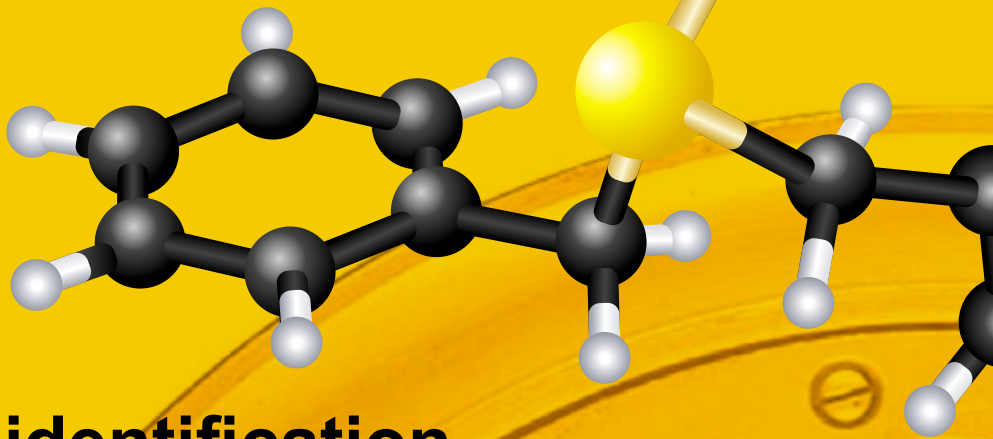


SmartComp™

Key to Metals Intelligent Search by Chemical Analysis

www.key-to-metals.com/smartcomp



Immediate identification

What grade corresponds to this composition?

What is its designation? Where is it from?

What are its other properties?

What are its equivalents? How can I replace it?

in mere seconds

1. Take the unknown chemical composition

Element	Value	Element	Value	Element	Value	Element	Value
<input checked="" type="checkbox"/> C	0.95	<input checked="" type="checkbox"/> Fe	0.14	<input checked="" type="checkbox"/> Ni	0.01	<input type="checkbox"/> S	
<input checked="" type="checkbox"/> Si	0.14	<input checked="" type="checkbox"/> Mn	0.01	<input type="checkbox"/> Zn		<input type="checkbox"/> Pb	
<input checked="" type="checkbox"/> Mn	0.33	<input checked="" type="checkbox"/> Nb	0.002	<input type="checkbox"/> Cr		<input type="checkbox"/> La	
<input checked="" type="checkbox"/> P	0.012	<input checked="" type="checkbox"/> Ti	0.002	<input type="checkbox"/> Al		<input type="checkbox"/> Sn	
<input checked="" type="checkbox"/> S	0.015	<input checked="" type="checkbox"/> V	0.004	<input type="checkbox"/> Sr		<input type="checkbox"/> Ta	
<input checked="" type="checkbox"/> Cu		<input type="checkbox"/> Ca		<input type="checkbox"/> Sb		<input type="checkbox"/> Bi	
<input checked="" type="checkbox"/> Ni	0.001	<input checked="" type="checkbox"/> In	0.004	<input checked="" type="checkbox"/> Tl	0.01	<input type="checkbox"/> Fr	
<input checked="" type="checkbox"/> Cr	1.48	<input checked="" type="checkbox"/> Co	0.005				

→ As you get it from the measurement instrument, test results or documentation

2. Get the results – instantly

Material	Manufacturer	Subgroup	Similarity
S 135	U.S. / United Kingdom	85 25120	0.94
BL 1	U.S. / United Kingdom	85 4859	0.94
EX31	U.S. / United Kingdom	85 970	0.94
14100	CSN / Czech Republic	CSN 41 4100	0.94
14108	CSN / Czech Republic	CSN 41 4108	0.94
14259	CSN / Czech Republic	CSN 41 4259	0.94
012	GB / China	GB 1299	0.94
012E	GB / China	GB/T 3203	0.94
012H	GB / China	GB/T 3203	0.94

→ It is easy-to-use, with fingertip access, desktop- or Web-enabled

3. Review the metal properties

Element	Std.	Unit	Assign	Element	Standard / Country
C	0.9500	1.0000		100 C 6	Austenitic / France
Si	0.1400	0.2000		100 C 6	Austenitic / France
Mn	0.3300	0.4500		100 C 6	Austenitic / France
P	0.0120	0.0200		100 C 6	Austenitic / France
S	0.0150	0.0200		100 C 6	Austenitic / France
Ni	0.0100	0.0200		100 C 6	Austenitic / France
Cr	1.4800	1.6000		100 C 6	Austenitic / France
Fe	0.0000	0.0000		100 C 6	Austenitic / France
Co	0.0000	0.0000		100 C 6	Austenitic / France
Cu	0.0000	0.0000		100 C 6	Austenitic / France
Nb	0.0000	0.0000		100 C 6	Austenitic / France
Mo	0.0000	0.0000		100 C 6	Austenitic / France
W	0.0000	0.0000		100 C 6	Austenitic / France
Zr	0.0000	0.0000		100 C 6	Austenitic / France
Al	0.0000	0.0000		100 C 6	Austenitic / France
Sn	0.0000	0.0000		100 C 6	Austenitic / France
Bi	0.0000	0.0000		100 C 6	Austenitic / France
Fr	0.0000	0.0000		100 C 6	Austenitic / France

→ SmartComp™ is a silent expert readily available whenever you need it

KEY to METALS

Key to Metals Intelligent Search by Chemical Analysis

the problem

New generation of instruments can now provide you chemical analysis of a metal literally in seconds. BUT...

You still cannot figure out what it really is. You cannot get neither grade designation, nor its origin and properties, nor its equivalents.

Classic search engines CANNOT answer those questions because

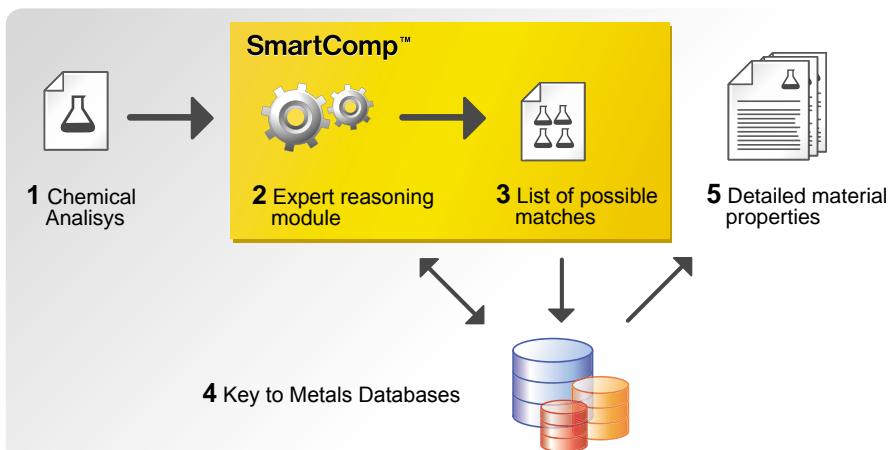
- Instruments detect trap elements, impurities and oligoelements, not defined by standard specifications – their presence would be ignored by an expert, but search engines are bogged down by those elements
- There is a measurement error and non-homogeneity in the material
- They cannot really rank elements by relevance for the analyzed steel grade

Hence material identification still induces costs and decreases revenue

- Thousands of working hours spent in research, sometimes in vain
- Cost of communication, acquiring specifications and standards
- Rework and scrap due to inadequate material selection
- Lost business and business opportunities on domestic and international market

the solution

SmartComp™, a Key to Metals professional add-on, the worldwide unique program for unprecedented chemical analysis search:



- 1 Enter analysis as you received it from the measurement instrument, from metallurgical lab or from documentation
- 2 By using original expert reasoning module and SmartSearch™ technology, based on fuzzy sets and metallurgical expertise, it distinguishes important composition variations from the noise and trap elements
- 3 Provides you with a list of possible matches, prioritized by similarity factors
- 4 Finds matches and equivalents from over 100,000 alloys from the KEY to METALS • Steel and the KEY to METALS • Nonferrous databases
- 5 Gives you an opportunity to immediately view detailed material properties through hot links with the KEY to METALS • Steel and the KEY to METALS • Nonferrous database

Who is it for?

SmartComp™ is indispensable for materials and engineering professionals in

- Metallurgical laboratories
- Engineering design and reverse engineering
- Manufacturing control and quality assurance
- Material sourcing
- Research institutes and universities
- Defense and security
- and elsewhere

SmartComp™ doesn't only save money, it earns money

A Mid-Size Metallurgical Lab 1. case

- Activity: 200 analysis/month
- Increased revenue: 12 to 20%

A Steel Producer 2. case

- Activity: 9000 analysis/month internally, 60 analysis/month externally
- Increased process control efficiency: 4%

Benefits

- Reduces the need for external metallurgical consulting
- Significant savings in purchasing standards and specifications
- In either Web or CD Edition, through the Internet you always get up-to-date information
- Integrated within Key to Metals, for additional time-savings and better performance
- Special extended support program for metallurgical laboratories
- Very affordable, excellent Return-on-Investment

The professional add-on for KEY to METALS • Steel, KEY to METALS • Nonferrous or Key to Metals SmartComp™ starts already

FROM \$295/ €225

Please review price list for more details.